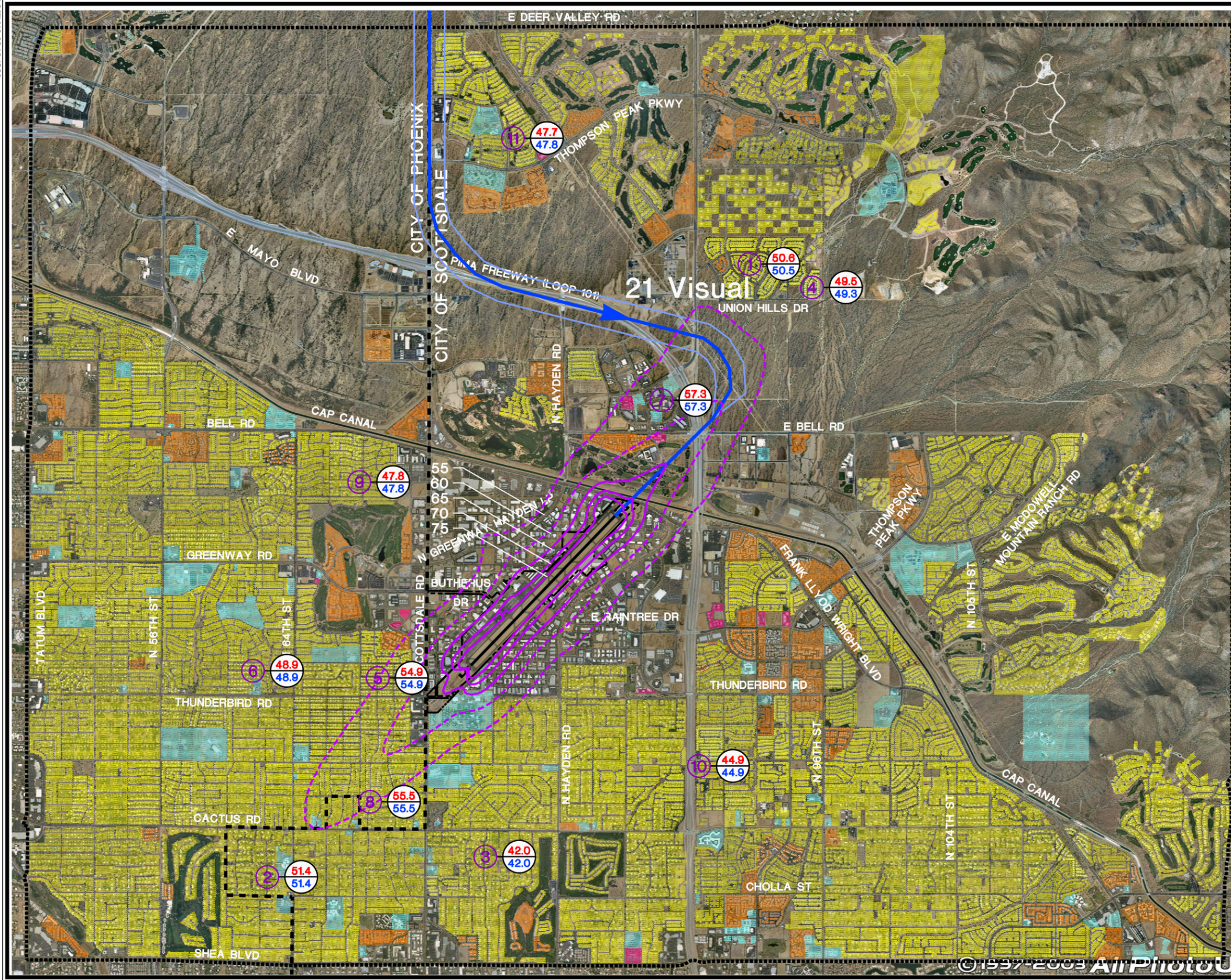


038P01-5J-07/12/04

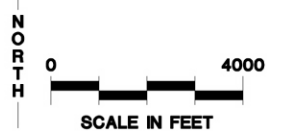


**LEGEND**

- Detailed Land Use Study Area
- - - - - Municipal Boundary
- Airport Property
- - - - - Alternative 2 - Noise Exposure Contour, Marginal Effect
- Alternative 2 - Noise Exposure Contour, Significant Effect
- Alternative Runway 21 Visual Arrival Tracks
- Alternative Runway 21 Visual Arrival Sub-Tracks
- 3A Flight Track Designation
- Single-Family Residential
- Multi-Family Residential
- Noise Sensitive
- Daycare Facility
- Library
- Medical/Dental/Nursing
- Museum
- Place of Worship
- School
- 3 Noise Monitor Location
- 63.7 INM-Predicted DNL, 2009
- 63.6 INM-Predicted DNL, Alternative 2

Source: Coffman Associates Analysis, Maricopa County Assessors Database.

Photo: Todd Photographics Service, 30 April 2004.



© 1997-2003 All Photo U